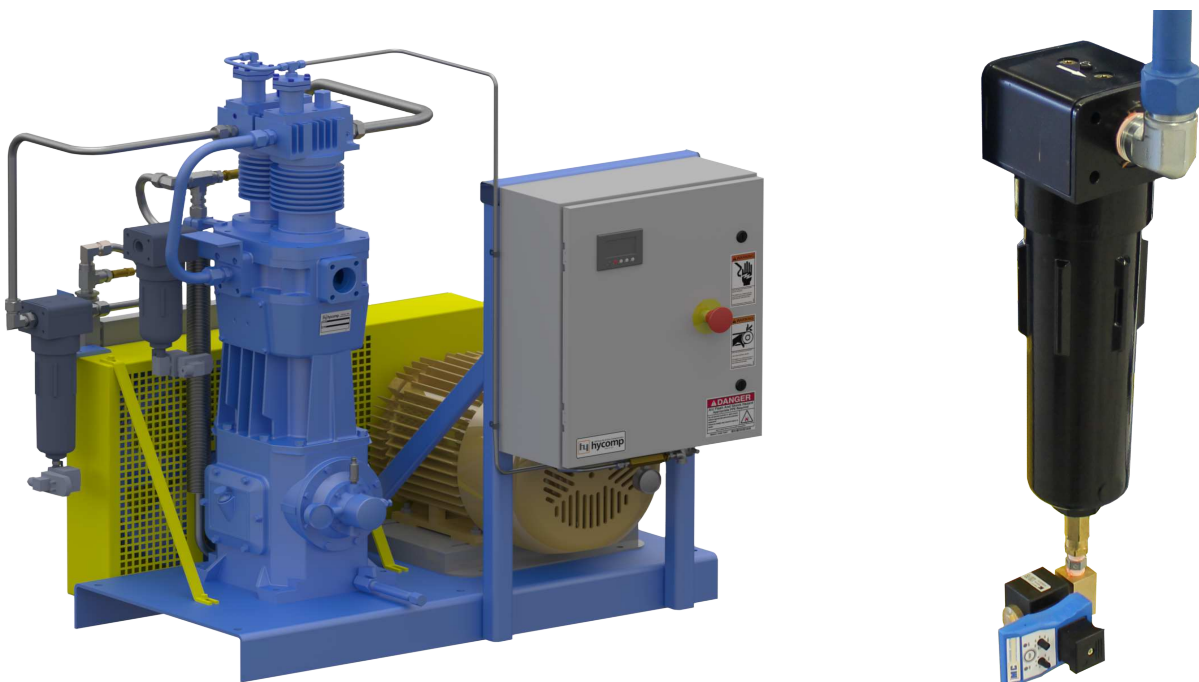




Moisture Separator Option

Description

The moisture separator option can be added between compression stages, as well as at final discharge of the booster. Each instance of this option features a factory-installed, high-pressure centrifugal moisture separator with a user-adjustable automatic timer drain. To ensure we are constantly improving, Hycomp reserves the right to make changes without prior notice.



Benefits

This option provides a solution for users that are processing gases with high moisture content. When these “wet gases” are compressed, some of the moisture will condense into liquid water droplets. The moisture separators will remove this liquid moisture from the gas stream, and the automatic drains will then drain off the liquid at intervals set by the user. The removal of this liquid water from the gas stream is critical for maintaining the health of the Hycomp booster and any downstream equipment. Installing moisture separators reduces the risk of equipment damage and product spoilage, which may lead to expensive maintenance shutdowns.

Installation

The moisture separators are factory-plumbed within the booster package and the automatic drains are factory-wired. No additional installation is required, however the user may need to adjust the drain cycle intervals for their specific application.

