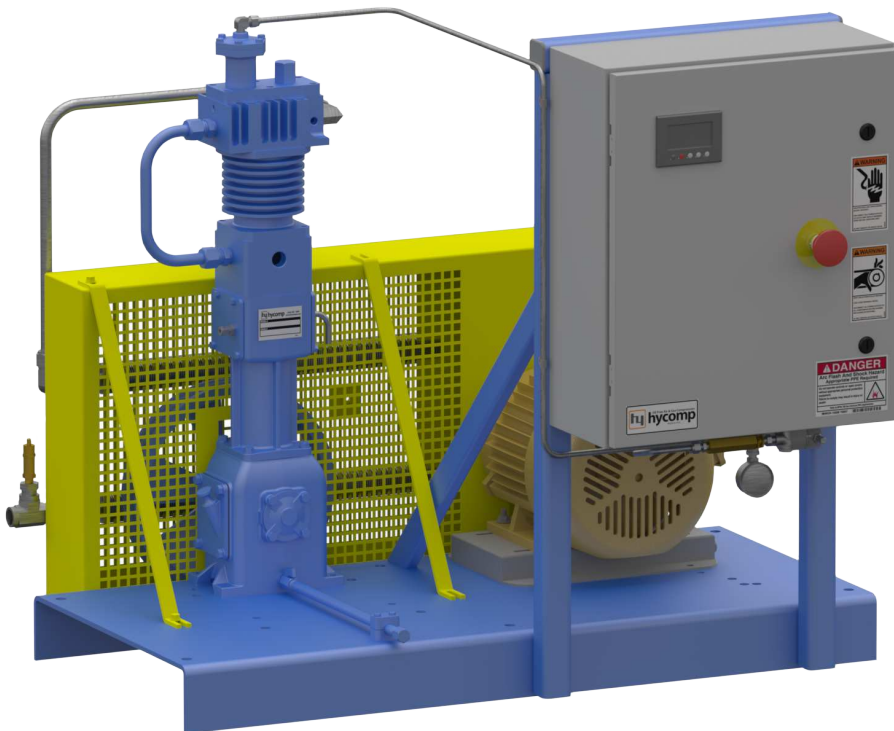




DS026 Odyssey Air and Nitrogen Booster

Trust, It's What We Build

Trust Hycomp's Odyssey line of Oil-Free Air and Nitrogen boosters for your critical project needs. Designed to prevent contamination and losses of the gas stream, these units provide worry free operation and a 20+ year life expectancy.



100% Oil-Free Gas Stream

**ISO 8573-1 Compliance
Eliminates Risk to Product
and Equipment**

**Durable Cast Iron and
Steel Construction**

24 Hour Duty Cycle

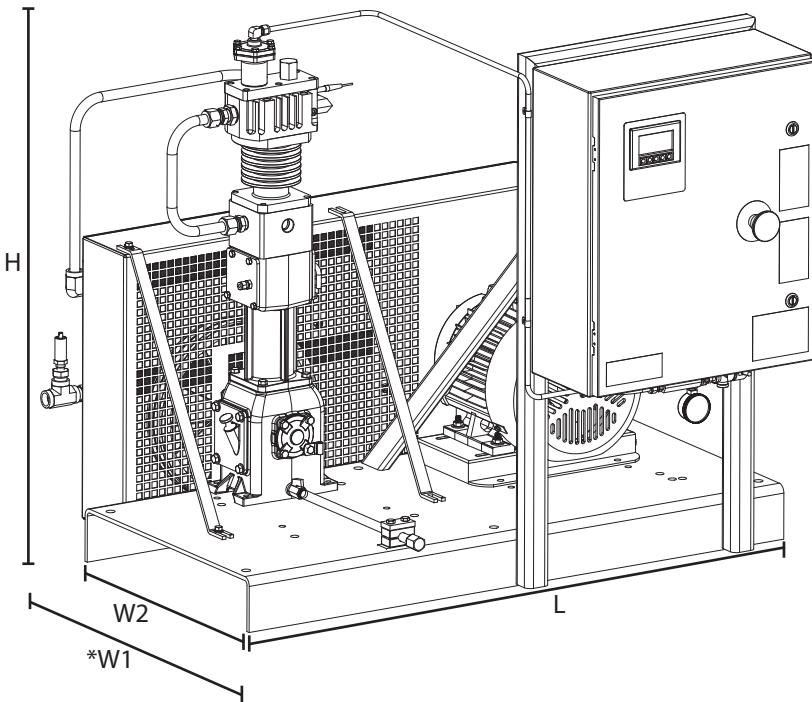
**Simple Annual
Maintenance**

**24 Hour Live Tech
Support**

Made in the USA

The Compressor So Reliable, You'll Forget It's There

DS026 Odyssey Air and Gas Booster



*Includes front control panel and rear belt guard assembly.

Dimensions

Length:	50"
Overall Width (*W1):	46"
Skid Width (W2):	23"
Height:	46"
Estimated Weight:	700 lbs
Estimated Shipping Weight:	950 lbs
Suction (FNPT):	3/4"
Discharge (FNPT):	3/4"
Instrument Ports (FNPT):	1/4"

Technical Specifications

Bore:	3.00"
Stroke:	2.50"
No. of Stages:	1
No. of Cylinders:	1
Cooling:	Air
Controls:	PLC Touch Screen Interface
Compressor Model:	AN6A

Utility Requirements

Power (7.5 HP):	460/3/60 10.5 FLA
-----------------	-------------------

Additional Options

- Auxiliary Cooling Fan
- Cold Weather Packaging
- Duplex Programming
- Multiple Voltages
- Modbus Gateway
- Moisture Separators
- DSi Install Kit Includes:
 - Filters
 - Regulator
 - Tanks
 - Flex Hoses

Capacity

Suction Pressure (PSIG)	Discharge Pressure (PSIG)	Minimum Flow (SCFH)	Maximum Flow (SCFH)
70	200	1,250	1,860
70	250	1,200	1,780
80	200	1,430	2,130
80	250	1,380	2,050
80	300	1,320	1,750
90	200	1,610	2,400
90	250	1,560	2,310
90	300	1,500	2,070
100	200	1,790	2,670
100	250	1,730	2,580
100	300	1,680	2,310

Table based on 80F suction temperature at sea level. Cooling fan option may be required to reach maximum flow.

Contact Hycomp for specific capacity at given conditions.

To ensure we are constantly improving, Hycomp reserves the right to make changes without prior notification.

L248, Rev 3